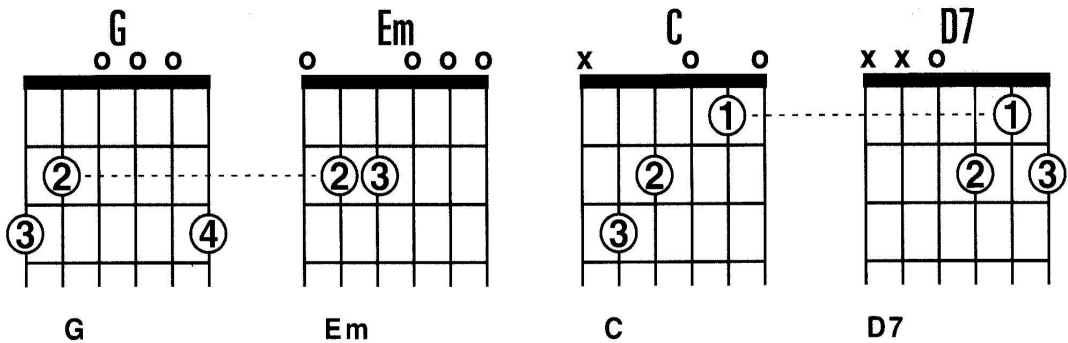
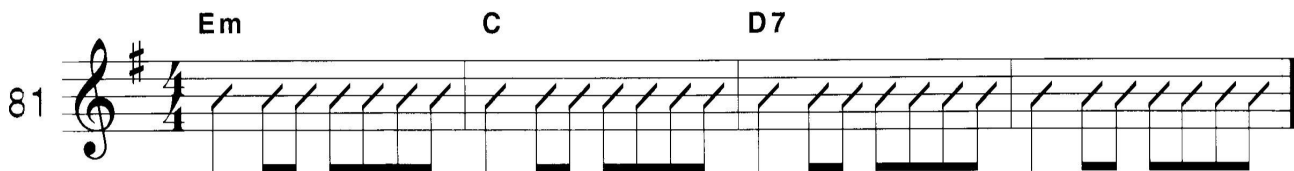
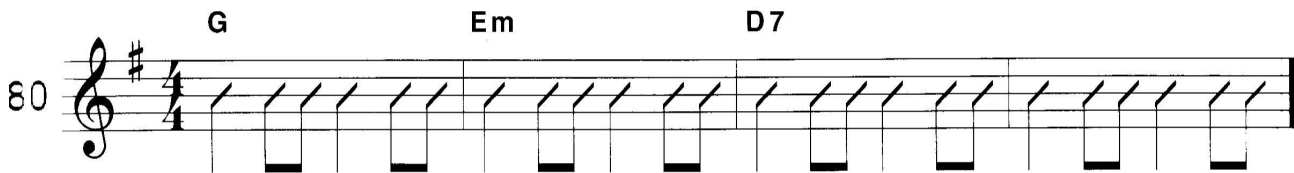


## CHORD PAIRS

As you move between different chords, if one or more fingers remain on the same note, allow them to stay pressed as you switch chords. In the following progression there is a common finger between the G and Em chords and a common finger between the C and D7 chords.



Practice the following chord progressions until you can play them steadily and without any hesitation between chord changes. Try to move your fingers to a new chord as a unit instead of “letting your fingers do the walking” one at a time.



You can vary the strumming by alternating between a bass note (usually the lowest note of a chord and the name of the chord) and the remainder of the chord. This style of accompaniment is referred to as the **bass note strum**, or “boom chick” rhythm.

